

# ABOX-E7L

## *High performance industrial box computer*

*Intel 6/7<sup>th</sup> Core i7/i5/i3 Desktop multi-core processors, with PCIe and MXM expansion*

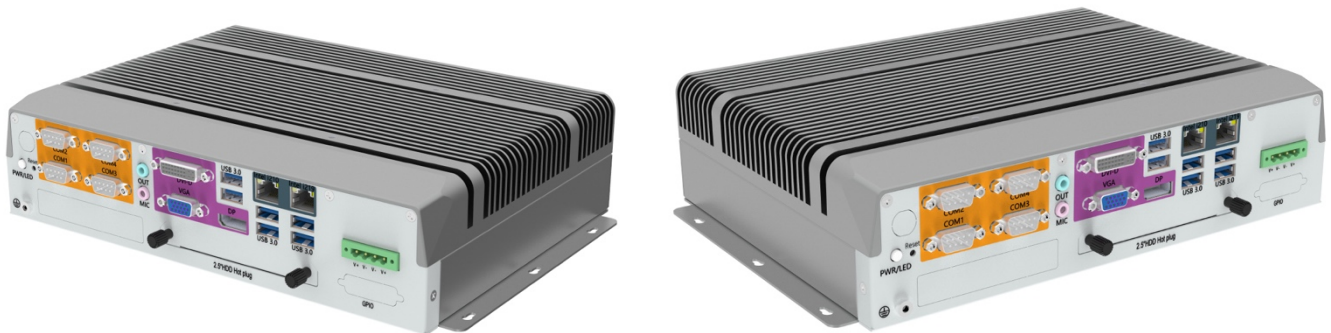
### Specification

V2.0

#### Key features:

- ◆ Support Intel® 6<sup>th</sup> /7<sup>th</sup> Core™ i7/i5/i3 desktop multicore processors;
- ◆ Q170 industrial chipset;
- ◆ 2x DDR4 SO-DIMM , Max. up to 32GB, Dual channel support;
- ◆ 3x Display ports;
- ◆ Max. expansion up to 10 USB ports;
- ◆ Max. expansion up to 6x Intel RJ45 port;
- ◆ Max. expansion up to 6x COM ports;
- ◆ Optional power solution (DC 18~36v wide voltage optional)

#### Product Image



## Specification parameter

| System        |   |   |
|---------------|---|---|
| Processor     | CPU   | Intel® 6-/7- Core™ i3/i5/i7 Desktop LGA1151 CPU, TDP=35W (fan-less)   |
|               | Chipset                                     | Intel® Q170 Chipset   |
|               | BIOS  | AMI SPI 64Mb, support ACPI, CPU temperature, system voltage monitoring  |
| Memory        | Interface                                   | 2 x DDR4 SO-DIMM, @1.2V, 1866/2133/2400/2666 MHz  |
|               | Capacity                                    | Max. single RAM up to 16G, Dual channels, Expansion up to 32GB  |
| Storage       | Interface                                   | 1 x 2.5" HDD, support 5~9.5mm, hot pluggable  |
|               |   | 1 x 2.5" HDD, support 5~9.5mm , Internal  |
|               |   | 1 x M.2 SATA 3.0 ( 22*42mm ), Internal  |
| Display       | Chipset                                     | CPU integrated Intel® HD Graphics, support DirectX12  |
|               | Ports                                       | 1 x DP (Max. support resolution: 4096x2304 x24bpp, @ 60Hz)  |
|               |   | 1 x DVI-D (Max. support resolution: 1920x1200, @ 30Hz)<br>1 x VGA (Max. support resolution: 2048x1536)  |
| Network       | Chip  | 2 x Intel® Ethernet Connection; LAN1: I210-AT, LAN2: I219-LM, support WOL   |
|               | Wireless                                    | 1 x Mini-PCIE (Half/ full, support 802.11b/g/n, 3G/4G, optional)<br>1 x SIM slot  |
| Audio         | Chips                                       | Realtek ALC662 5.1 Channel HAD Code   |
|               | Port  | 1 x Mic-in + 1 x Audio-out  |
| I/O           | USB   | 6 x USB 3.0   |
|               | COM   | 4 x DB9 RS232 (COM1/COM2 support RS485/RS422/RS232, BIOS controllable)  |
| Expansion I/O | Front signal                                | 1x 6 pin front panel controlled signal (Power on, restart, status LED, optional)  |
|               | Watchdog                                    | 1 x Internal USB 2.0 (Optional)   |
|               | COM   | 2 x 9pin COM pin-header (RS232)   |
|               | GPIO  | 8 x GPIO ( 4 IN 4 OUT , DI low level, DO high level, DI/DO BIOS configurable, Optional<br>8 x GPIO ( 4 IN 4 OUT, photoelectric isolated, 5V~40V wide voltage input , OMRON relay output, DB25, optional ) |
| Power         | MXM   | 1 x MXM 3.0 (support 4x GigE)   |
|               | Type  | DC  |
|               | Port  | 1 x 4pin 5.08 phoenix terminal, with hole lock  |
| LED/Switch    | Input                                       | 18~36V, Max. power support 240W   |
|               | Power on                                    | 1 x power on button ( including status LED light )  |
| Watchdog      | Reset                                       | 1 x reset/restart button (Long press ≥3s when power of, clear CMOS; press 0.2~1s reset when power on)   |
|               |   | Programmable 255 seconds  |
| OS            | version                                     | 6th Core™: Windows 7/8.1/10 32 or 64 bits, Linux  |
|               |   | 7th Core™: Windows 7/8.1/10 64 bits, Linux  |
| RAID          | Mode  | 0, 1  |
| Structure     |   |   |
| Treatment     | Hard anodizing treatment, scratch resistant |   |

|                      |   |
|----------------------|---|
| Color                | Iron grey, industrial grey color  |
| Cooling              | Fan-less design   |
| Weight               | 4.12kg  |
| Dimension            | 268mm(L) x 194.2mm(W) x 67.7mm(H)   |
| Mounting             | Desktop, wall mount, VESA mount (100 x 100mm)   |
| <b>Environmental</b> |   |
| Operation temp.      | Operating temp.: -20~60°C (Industrial SSD)<br>Operating temp.: 0~40°C (HDD)                 |
| Storage              | -40~80°C  |
| Humidity             | 10%~90%@40°C (non-condensation)   |
| Vibration            | SSD : 3Grms@5~500Hz , random , 1 hr/axis ;<br>2.5" HDD : 1Grms@5~500Hz , random , 1 hr/axis |
| Shock                | 10G/peak (11ms sec)   |

## Interface and Dimension

**ABOX-E7L**

**Interface explanation**

|         |             |           |              |         |               |
|---------|-------------|-----------|--------------|---------|---------------|
| 1:Power | 2:LAN       | 3:USB3.0  | 4:DVI-D      | 5:Out   | 6:COM         |
| 7:Reset | 8:Switch    | 9:Earth   | 10:MXM Slots | 11:MIC  | 12:VGA        |
| 13:DP   | 14:2.5" HDD | 15:USB3.0 | 16:SIM       | 17:GPIO | Reserved hole |

## Ordering Information

|                 |  |
|-----------------|--|
| ABOX-E7L-61     | Intel Skylake i3-6100T/1*DVI-D/1*DP/1*VGA/2*RJ45/6*USB/4*RS232/DC/Mic In/Line-Out  |
| ABOX-E7L-62     | Intel Skylake i5-6500T/1*DVI-D/1*DP/1*VGA/2*RJ45/6*USB/4*RS232/DC/Mic In/Line-Out/ |
| ABOX-E7L-63     | Intel Skylake i7-6700T/1*DVI-D/1*DP/1*VGA/2*RJ45/6*USB/4*RS232/DC/Mic In/Line-Out  |
| ABOX-E7L-71     | Intel Kabylake i3-7100T/1*DVI-D/1*DP/1*VGA/2*RJ45/6*USB/4*RS232/DC/Mic In/Line-Out |
| ABOX-E7L-72     | Intel Kabylake i5-7500T/1*DVI-D/1*DP/1*VGA/2*RJ45/6*USB/4*RS232/DC/Mic In/Line-Out |
| ABOX-E7L-73     | Intel Kabylake i7-7700T/1*DVI-D/1*DP/1*VGA/2*RJ45/6*USB/4*RS232/DC/Mic In/Line-Out |
| Memory          | DDR4L 4G/8G/16G/32GB   |
| Storage         | SSD: 32GB/64GB/128GB/256GB/512GB/1TB<br>HDD: 500GB/1TB                             |
| Wireless module | Wifi: 802.11b/g/n Mini PCIe 150M<br>3G/4G: All network 4G module                   |

**TAICENN**, is a leading global **solution provider** of Embedded Box PC, Touch panel PC and industrial monitor, which are designed specifically for systems and applications that require excellent performance, high-level reliability and stability, long supply period and supports.

*The information in this specification is subject to change without notice*

*All parts of TAICENN Technology documentation are protected by copyright law and all rights are reserved. This documentation may not, in whole or in part, be copied, photocopied, reproduced, translated, or reduced to any electronic medium or machine-readable form without prior consent, in writing, from TAICENN Technology.*