

TAICENN

CTPC-DC156HR1

15.6" Rockchip RK3288 **Full HD** VESA mounting industrial Panel PC

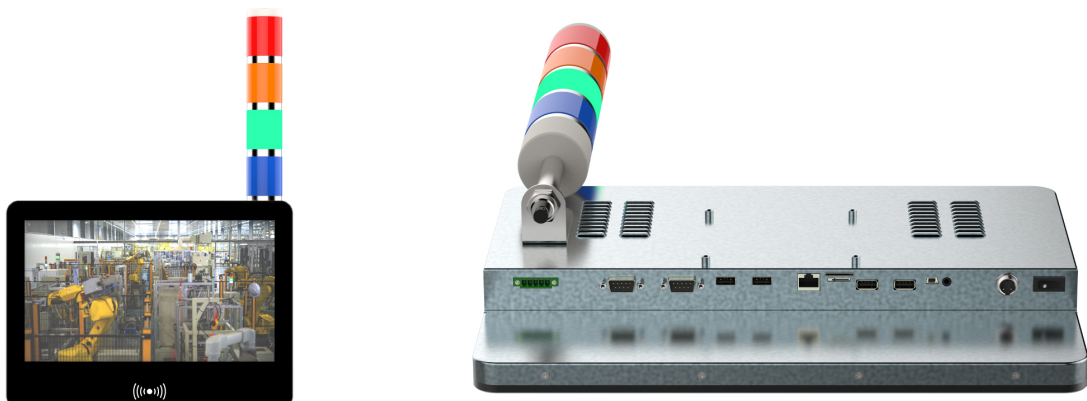
Specification

Version 1.0

Key features:

- 15.6" WXGA-LCD, Full HD, resolution 1920 x 1080;
- Rockchip Quad-core Cortex-A17 + Quad-core GPU Mail-T764 processor;
- IO: 4x USB2.0, 1x RS232 + 1x RS485, 1x GLAN, 1x HDMI;
- Multi-points (Max. up to 10 points) projective capacitive touch screen;
- Support Wi-Fi/3G/4G wireless expansion, VESA mounting on the back panel;
- 1* 12V four-colors alarm lamp per customers' request;

Product Image

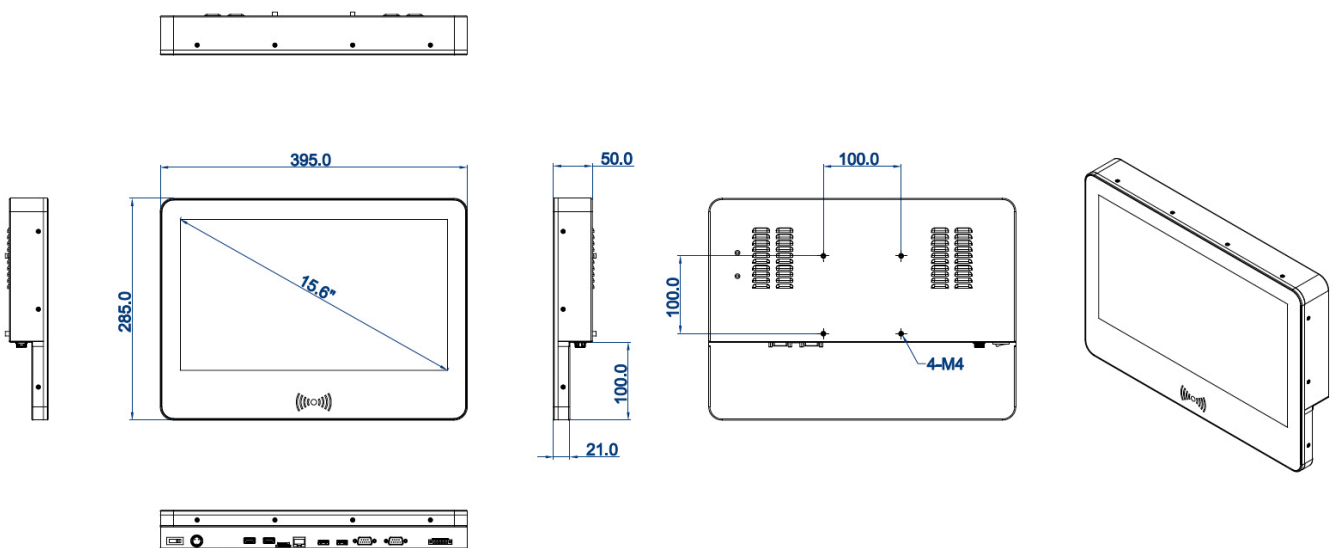


Technical Data

Model Item	CTPC-DC156HR1
System	
CPU	Rockchip RK3288 Quad-core Cortex-A17 + Dual-core GPU Mail-T764
CPU Ghz	1.8G
Memory	DDR, Onboard 2G (Max. up to 4G)
Storage	Nand Flash 8GB/16GB/32GB, standard with 8GB, support eMMC
Watch dog	Support software watchdog
Operating System	Android 6.0
I/O	
Network	1x RJ45, 10/100/1000 Mbps
USB	4x USB2.0
Display	1* HDMI
Serial ports	1* DB9 RS232 + 1* DB9 RS485
TF Card	Max. support 64GB
RFID	1* RFID module, 13.56Mhz
Alarm lamp	4 colors alarm lamp
Speaker	Big internal speaker, 2* 6W (Optional)
WIFI + Bluetooth	Integrated with Wifi module, support 2.4G, Wi-Fi 802.11b/g/n Integrated with Blue tooth feature, V2.1 + EDR/Bluetooth 3.0/3.0 + HS/4.0
3G/4G	Optional support 3G/4G/LTE
GPS	Integrate with GPS module
LCD	
Size/Type	15.6" TFT XGA LCD
Resolution	1920 * 1080 (WXGA)
Brightness	400 (cd/m ²)
Brightness MTBF	WLED, 50 000 hours
Display area	344.16 x 193.59 mm (H*V)
Ratio aspect	16 : 9
Response time	< 8ms
Viewing angle	85/85/80/80 (Typ.)
TOUCH	
Type	Projective capacitive (P-cap.)
Interface	USB
Transparency	>90

Touch points	Multi-points (Max. up to 10 points)
Durability	>100 000 000 times
Touch input	Finger/ touch pen
Surface hardness	Mohs 7H
Operating force	< 10g
Special treatment	Anti-finger treatment (AF)
Structure	
Materials	Aluminum-zinc clad sheet
Cooling System	Fan-less design
IP rating	IP65 front panel
Mounting	VESA 100x100
Product Dimension	395 x 285 x 50 (mm)
Net weight	3.8 KG
Power and Environmental	
Power Input	DC 12V
Power Connector	1* 2-cells aviation connector
Working temperature	0°C~+60 °C
Storage temperature	-20°C~+60 °C
Relative humidity	10~95%@10°C (No condensation)
Vibration	50~500Hz,1.5G,0.15mm peak to peak
Shock	10G/peak (11ms sec)

Dimension



*TAICENN, is a leading global **solution provider** of Embedded Box PC, Touch panel PC and industrial monitor, which are designed specifically for systems and applications that require excellent performance, high-level reliability and stability, long supply period and supports.*

The information in this specification is subject to change without notice

All parts of TAICENN Technology documentation are protected by copyright law and all rights are reserved. This documentation may not, in whole or in part, be copied, photocopied, reproduced, translated, or reduced to any electronic medium or machine-readable form without prior consent, in writing, from TAICENN Technology.