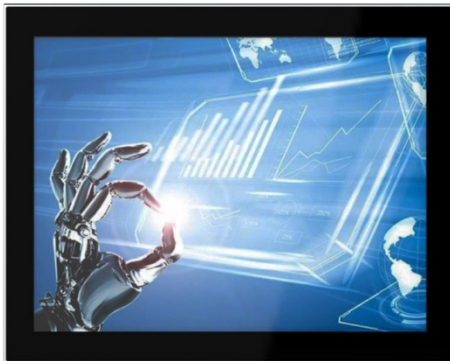


TPC-DCM150C 15.0" Flat Pcap. touch Industrial Panel PC

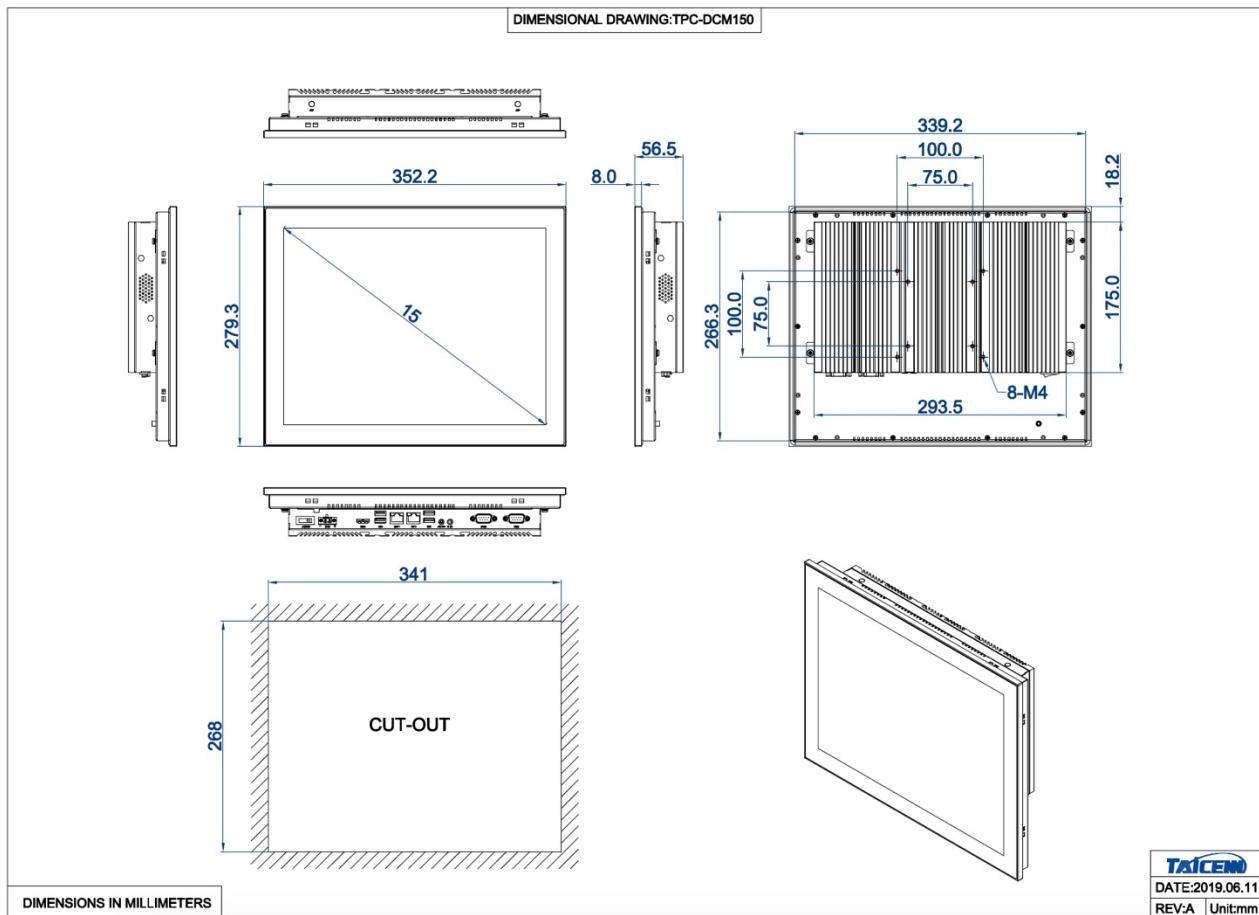


● Specification

| Hardware & system | |
|-----------------------|--|
| BIOS | SPI AMI EEI BIOS |
| CPU | Intel Baytrail J1900 processor, Quad-core 2.0Ghz, burst to 2.42Ghz |
| Memory | SO-DIMM, DDR3L, max. up to 8GB |
| Storage | 1* 2.5" SATA + 1*mSATA |
| Graphic card | Intel HD Graphics Gen7 |
| Network | 2* Intel I211AT (Optional 3G/4G/Wi-Fi) |
| Audio | On-board Realtek ACL 282 audio controller |
| Expansion | 1* Full size Mini-PCle slot |
| Watch dog | 0~256 seconds programmable |
| OS | Win7, Win8, Win embedded, Win10, Linux |
| IO interface | |
| COM | 2*RS232 (Support 1* RS485) |
| Ethernet | 2* RJ45, 10/100/1000 Mbps |
| Audio | Mic in/Line out |
| USB | 1* USB3.0 + 3* USB2.0 |
| Display | 1* HDMI |
| Power | 1* 2 pins, Phenix terminal |
| LCD | |
| Size/Type | 15.0" TFT LCD |
| Resolution | 1024*768 |
| Brightness | 350 nits |
| Backlit & MTBF | LED backlit & 50 000 hours |
| Display area | 304.128* 228.096 |
| View angle | 80/80/80/80 |
| Touch | |
| Type | Projective capacitive touchscreen |
| Touch points | Multi points touch, max. up to 10 points |
| Durability | >100 000 000 times |
| Surface hardness | Mohs 6H |
| Special treatment | Anti-fingerprint (AF) |
| Structure | |
| Structure and surface | Magnesium-Aluminum alloy, sand blasting, anodized treatment |
| Mount method | Panel mount, VESA 75/100 |
| Cooling system | Large area finned heat sink |
| Overall dimension | 352.2 * 279.3 * 56.5 (mm) |

| | |
|----------------------------------|--|
| Cutout dimension | 341 * 268 (mm) |
| Net weight | 3.9KG |
| Power & Environmental | |
| Operating temp. | -20 ~ +70C° |
| Storage temp. | -30 ~ +80C° |
| Relative humidity | 10 ~ 95% @ 10C (Non-condensation) |
| Vibration | 50 ~ 500 Hz, 1.5G, 0.15mm peak to peak |
| Shock | 10G/Peak (11 ms) |
| Voltage input | DC 9~24V |
| Power consumption | Around 35W |
| EMC | CE/FCC Class A |

● Dimension



● Ordering information

| | |
|-----------------|--|
| TPC-DCM150C1 | 15.0" LCD, 1024*768, Pcap. touch, Intel Baytrail J1900, 1*HDMI, 2*RJ45, 1*USB3.0, 3*USB2.0, 2*COM, Mic-in, Line-out, DC 9-24v, 60w PSU, Panel mount kits |
| Memory | SO-DIMM, DDR3L, 2G/4G/8GB |
| Storage | SSD: 16GB/32GB/64GB/256GB/512GB/1TB HDD: 500GB/1TB/2TB |
| Wireless module | Wi-Fi module, Wi-Fi with BT module, All network 4G module |